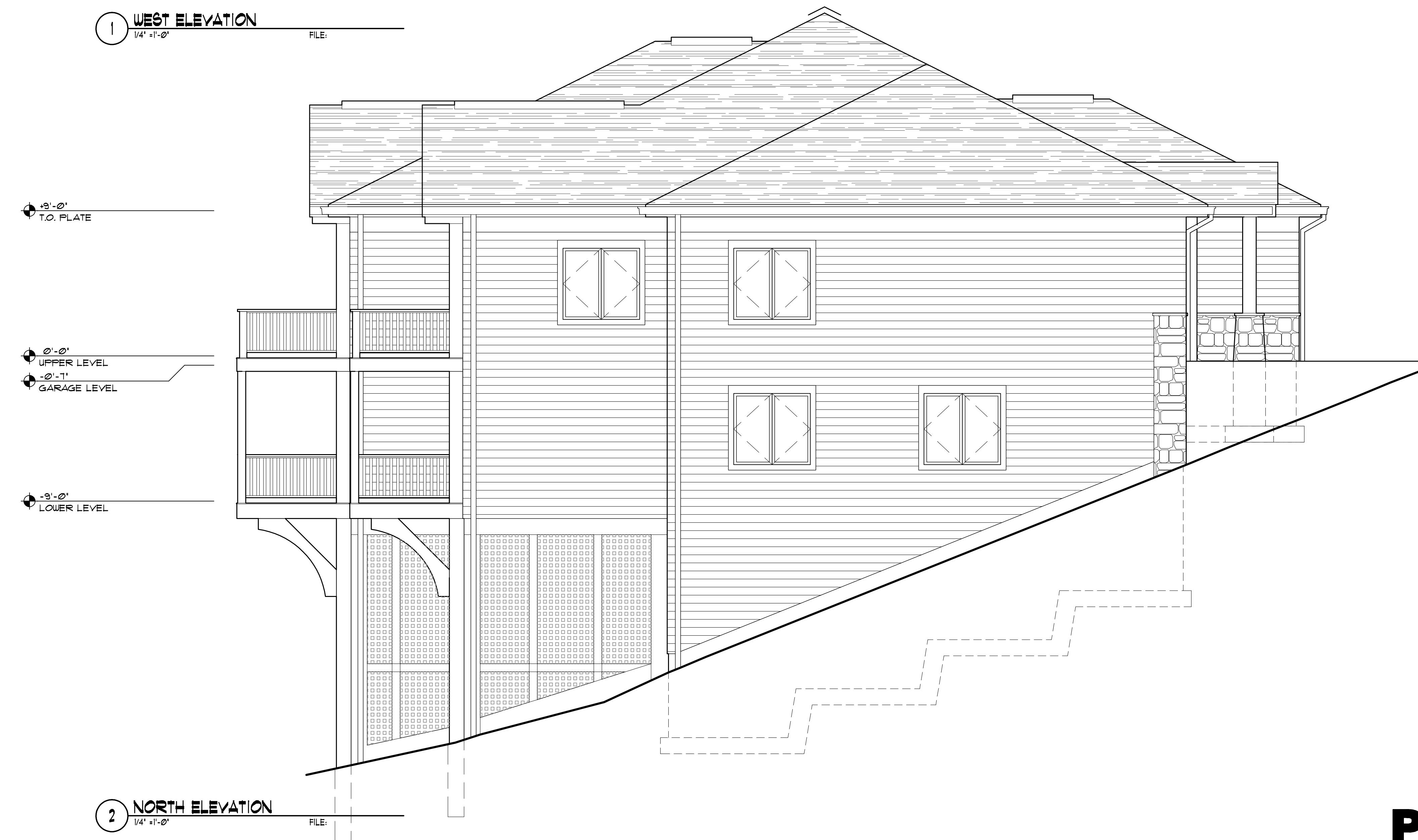


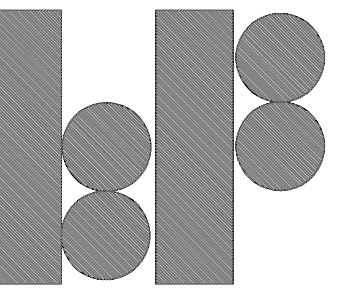


1 WEST ELEVATION
1/4" = 1'-0" FILE:



2 NORTH ELEVATION
1/4" = 1'-0" FILE:

Preliminary Design



KCF Architects

3800 West St.
Catskill, NY 14804

Phone: 845-884-7324
Fax: 845-884-4418



TSE

Travis Standard Engineering
& Design P.A.

481 Powers Rd.
Building 2, Suite 2100
Rochester, NY 14609

Phone: 585-426-9100
Fax: 585-426-0200
www.tseinc.com

PROJECT TITLE:
**BRISTOL HARBOUR
CLIFFSIDE VILLAS I**
UNIT 13B & 14B

Bristol Harbour
South Bristol, New York

DRAWING TITLE:
ELEVATIONS

NOTICE:
UNAUTHORIZED ALTERATIONS
OR ADDITIONS TO THIS DRAWING
ARE IN VIOLATION OF THE NEW
YORK STATE EDUCATION LAW
ARTICLE 147 SECTION 7205.
NO REVISIONS ARE PERMITTED
UNLESS AUTHORIZED BY THE
ARCHITECT OF RECORD.

REVISIONS:

PROJECT NO: 08-18-087F

SCALE: AS NOTED

DRAWN BY: MFP

DATE: 07.22.09

DRAWING #

A-4